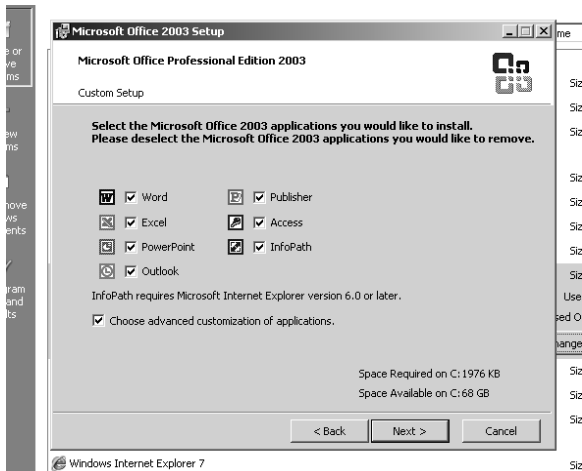
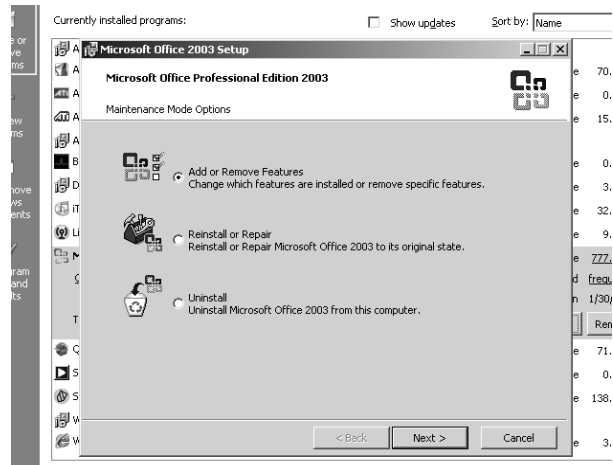


Tipsheet – Installation of Dragon Naturally Speaking 9

Before you install Dragon Naturally Speaking 9 you must modify MS Office. To do so, follow the steps below:

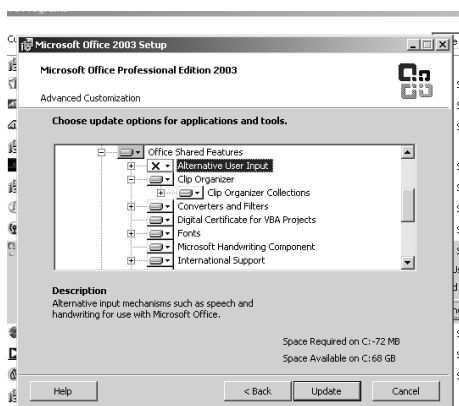
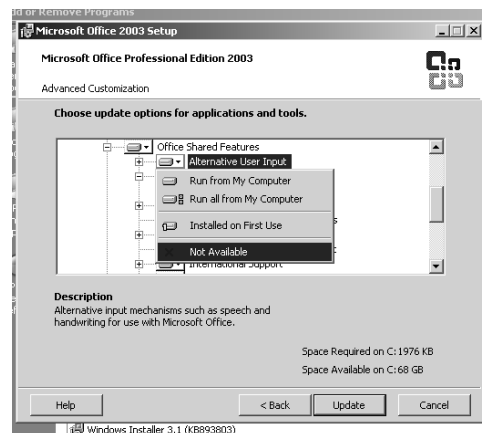
1. Click **Start → Settings → Control Panel**
2. Click **Add or Remove Programs**
3. Click **Microsoft Office**, and then click **Change**

4. Make sure the radio button beside **Add or Remove Features** is selected, and click **Next**.



5. Make sure the checkbox next to **Choose advanced customization of applications** is checked, and click **Next**.

6. Expand **Office Shared Features** by clicking on the plus sign. Click on the down arrow ▼ next to **Alternative User Input**, and select **Not Available**.



7. A red X will appear. Click **Update**.

8. Once the update is complete, you may install Dragon using the Installation disk.

Installing Dragon Naturally Speaking 9

Before installing, modifying or upgrading Dragon Naturally Speaking:

- Close all open applications.
- Turn off or disable any antivirus software; installation can sometimes trigger a false virus report.
- **NOTE: You must have Administrator Rights to install Dragon in Windows 2000 and Windows XP.**

To Install Dragon Naturally Speaking

1. Insert the first Dragon Naturally Speaking CD into your CD-ROM drive. If the installation does not start automatically, double click **My Computer**, double click the **CD Drive**, and then double click **Setup**. Depending on your installation options, you may be prompted to insert additional Dragon Naturally Speaking CDs.
2. Provide your customer information, including the serial number supplied with your Dragon Naturally Speaking installation.
3. Choose your installation directory. If there are no previous versions of Dragon Naturally Speaking on your system, the default directory is:
C:\Program Files\Nuance\NaturallySpeaking9
4. Choose the setup type **Typical/Complete** and click **Next** to continue.
5. Continue following the on-screen instructions. The setup program will install the files for Dragon Naturally Speaking to your computer.
6. When prompted, make sure to register your copy of Dragon Naturally Speaking. Once registered, Nuance can notify you of product updates and other offers.
7. Select "Check the Internet for program updates after setup completes." This lets you automatically update Dragon Naturally Speaking over the Internet when updates are available. Click Finish to complete the installation. The program may ask you to reboot your computer.
8. When you start Dragon for the first time, you will be prompted to Activate your software. You must be connected to the Internet to do so. If you do not activate your software, it will stop working after starting the product five times.

Contact AT-BC to discuss problems or arrange training: 604-264-8295